



Hydraulic Excavators **XE500EHR**



Rated Power: 321 kW
Operating Weight: 58000-63000 kg



1. Cummins QSX12 Engine meets the Euro-stage V standard. It is high pressure common-rail electronic injection engine with low speed and large torque, improving combustion efficiency, more energy-saving and environment friendly.
2. Advanced XCMG Excavator Intelligent Control System [XEICS].
3. Cabin "30 ° Heads up" function, widening the operators view and providing convenient and safer operation environment.
4. Maximum operation height 27.65 meters and reinforced 3 piece boom, guaranteeing the working efficiency.
5. Optimized hydraulic system deliver accurate maximum pump in a smooth way.
6. Maintenance is fast and convenient. Maintenance period of engine filter element has been extended.



■ Engine

	XE500EHR
Model	QSX12
Direct Injection	✓
Four Strokes	✓
Water Cooling	✓
Turbo-charging	✓
Air to air Intercooler	✓
No. of Cylinders	6
Rated Power/Speed	321 /1800 Kw/r/min
Maximum Torque/Speed	2034/1400 N.m
Displacement	11.8 L

■ Hydraulic System

	XE500EHR
Main pump	Two piston pumps
Rated flow of main pump	2×360 L/min
Main safety valve pressure	34.3/37 MPa
Travel system pressure	34.3 MPa
Swing system pressure	31 MPa
Pilot system pressure	3.9 MPa
Main pump	Two piston pumps

■ Main performance

	XE500EHR
Travel Speed (H/L)	5.4/3.2 km/h
Gradeability	≤35°
Swing Speed	9 r/min
Ground Pressure	97.2 kPa
Maximum Tractive Force	340 KN

■ Appearance size

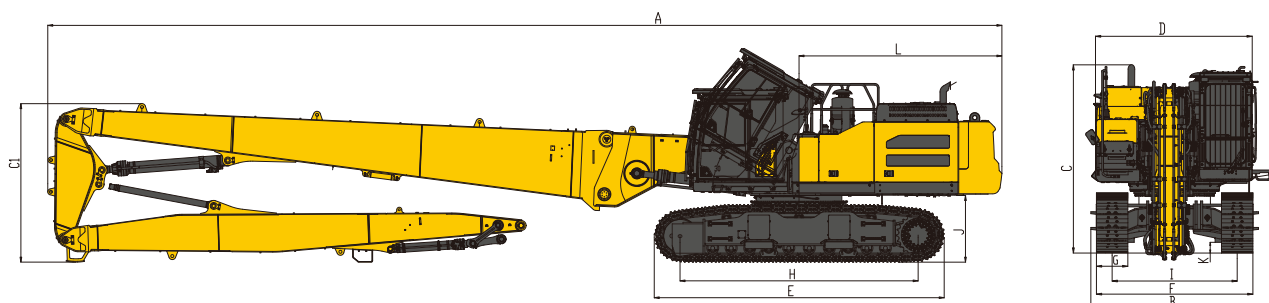
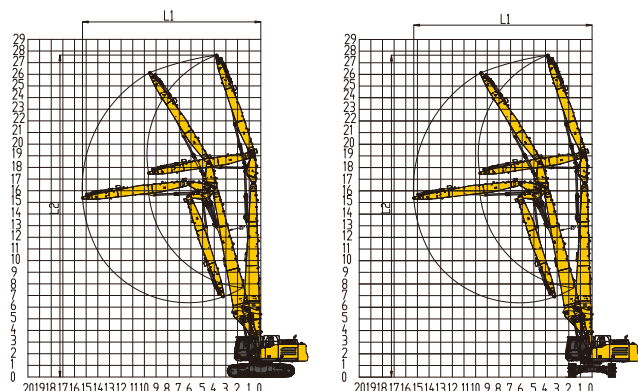
	XE500EHR
A Overall length	19058 mm
B Overall width	3559 mm
C Overall height	3597 mm
C1 Boom max transport height	3165 mm
D Width of platform	2995 mm
E Track length	5791 mm
F Overall width of chassis	2990-3990 mm
G Track shoe width	600 mm
H Tumbler distance	4756 mm
I Track gauge	2390 mm
J Counterweight clearance	1332 mm
K Min.ground clearance	205 mm
L Min.tail swing radius	4052 mm

■ Working scope

	XE500EHR
L1 Max operation radius	15315 mm
L2 Max operation height	27650 mm
Max elevation angle of cabin	30°
Best operation angle of boom	75°

■ Shears

	XE500EHR
Weight	2600 Kg
Break force	1085-1610 KN
Opening width	1100 mm



XCMG European Sales and Services GmbH

Address: Europark Fichtenhain B 4, 47807 Krefeld, Deutschland

Tel: +49 (0) 2151 8206 890

Fax: +49 (0) 2151 8206 899

E-Mail: info@xcmg-ess.de

XUZHOU CONSTRUCTION MACHINERY GROUP IMP. & EXP. CO., LTD

Address: No.1, Tuolanshan Road, Xuzhou Economic Developing Zone, Jiangsu, China 221004

Tel: + 86(0) 516 8773 9703

Fax: + 86(0) 516 8773 9230

E-Mail: europe@xcmg.com